



**India Meteorological Department
(Ministry of Earth Sciences)**

NATIONAL BULLETIN NO. 3 (LAND/02/2024)

TIME OF ISSUE:1415 HOURS IST

DATED:25.08.2024

FROM: INDIA METEOROLOGICAL DEPARTMENT (FAX NO. 24643965/24699216/24623220)

TO: CONTROL ROOM, NDM, MINISTRY OF HOME AFFAIRS (FAX.NO. 23093750)

CONTROL ROOM NDMA (FAX.NO. 26701729)

CABINET SECRETARIAT (FAX.NO.23012284, 23018638)

PS TO HON'BLE MINISTER FOR S & T AND EARTH SCIENCES (FAX NO.23316745)

SECRETARY, MOES (FAX NO. 24629777)

H.Q. (INTEGRATED DEFENCE STAFF AND CDS) (FAX NO. 23005137/23005147)

DIRECTOR GENERAL, DOORDARSHAN (23385843)

DIRECTOR GENERAL, AIR (23421105, 23421219)

PIB MOES (FAX NO. 23389042)

UNI (FAX NO. 23355841)

D.G. NATIONAL DISASTER RESPONSE FORCE (NDRF) (FAX NO. 26105912, 2436 3260)

DIRECTOR, PUNCTUALITY, INDIAN RAILWAYS (FAX NO. 23388503)

CHIEF SECRETARY, ODISHA (FAX NO. 0674-2536660)

CHIEF SECRETARY, WEST BENGAL (FAX NO. 033-22144328)

CHIEF SECRETARY, MADHYA PRADESH (FAX NO. 0755-2441076)

CHIEF SECRETARY, RAJASHTHAN (FAX NO. 0141-2227114)

CHIEF SECRETARY, MAHARASHTRA (FAX NO. 022- 22028594)

CHIEF SECRETARY, GUJARAT (FAX NO. 079-23250305)

CHIEF SECRETARY, DAMAN & DIU (FAX NO. 0260-2230775)

CHIEF SECRETARY, DADRA & NAGAR HAVELI (FAX NO. 0260-2645466)

CHIEF SECRETARY, GOA (FAX NO. 0832-2415201)

Sub: (a) Depression over east Rajasthan and adjoining northwest Madhya Pradesh

The depression over northwest Madhya Pradesh and adjoining east Rajasthan moved nearly westwards with a speed of 13 kmph during past 6 hours and lay centered at 1130 hours IST of today, the 25th August over east Rajasthan and adjoining northwest Madhya Pradesh near latitude 24.6°N and longitude 76.5°E, about 80 km west-southwest of to Guna (West Madhya Pradesh) and 90 km southeast of Kota (East Rajasthan).

It is likely to move nearly west-southwestwards, intensify further into a deep depression over east Rajasthan during next 12 hours. Thereafter, it will continue to move nearly west-southwestwards across south Rajasthan and Gujarat slowly and emerge into northeast Arabian Sea off Saurashtra & Kutch and adjoining Pakistan coasts around morning of 29th August.

(b) A Low Pressure Area formed over south Bangladesh & neighbourhood

Under the influence of the upper air cyclonic circulation over south Bangladesh & neighbourhood, a low pressure area has formed over the same region at 1130 IST of today, the 25th August 2024.

It is likely to become more marked and move west-northwestwards across Gangetic West Bengal, north Odisha and Jharkhand during next 2 days.

Warnings:

(i) Rainfall Warning:

West Madhya Pradesh: Light to moderate rainfall at most places with heavy to very heavy rainfall at a few places on 25th & 26th with extremely heavy rainfall at isolated places is likely on 25th August.

East Madhya Pradesh: Light to moderate rainfall at many places with heavy to very heavy rainfall at isolated places is likely on 25th and 26th August.

East Rajasthan: Light to moderate rainfall at most places with heavy to very heavy rainfall at a few places and extremely heavy rainfall at isolated places is likely on 25th and 26th August.

West Rajasthan: Light to moderate rainfall at most places with heavy to very heavy rainfall at isolated places is likely during 25th to 27th.

South Rajasthan: Light to moderate rainfall at most places with isolated heavy to extremely heavy rainfall over **South Rajasthan** is likely on 27th August.

Gujarat region: Light to moderate rainfall at most places with heavy to very heavy rainfall at a few places and isolated extremely heavy rainfall likely on 25th and 26th and heavy to very heavy with isolated extremely heavy rainfall over south Gujarat on 27th August.

Saurashtra & Kutch: Light to moderate rainfall at most places with heavy to very heavy rainfall at a few places and extremely heavy rainfall at isolated places is likely during 25th -28th August and heavy to extremely heavy rainfall at isolated places is likely on 29th August.

Konkan & Goa: Light to moderate rainfall at most places with heavy to very heavy rainfall at a few places and extremely heavy rainfall at isolated places is likely on 25th and 26th and heavy to very heavy rainfall on 27th August.

Madhya Maharashtra: Light to moderate rainfall at most places with heavy to very heavy rainfall at a few places and extremely heavy rainfall at isolated places is likely on 25th & 26th and heavy to very heavy rainfall at isolated places is likely on 27th August.

Odisha: Light to moderate rainfall at most places with heavy to very heavy rainfall at isolated places is likely on 25th and 26th August.

Gangetic West Bengal: Light to moderate rainfall at most places with heavy to very heavy rainfall at isolated places is likely on 25th and 26th August.

Jharkhand: Light to moderate rainfall at many places with heavy to very heavy rainfall at isolated places is likely on 25th and 26th August.

(ii) Wind warning:

- Strong surface wind speed reaching 30-40 kmph gusting to 50 kmph is very likely to prevail over Madhya Pradesh during 25th & 26th August.

- Strong surface wind speed reaching 30-40 kmph gusting to 50 kmph is very likely to prevail over South Rajasthan on 25th & 26th August and squally wind speed reaching 40-50 kmph gusting to 60 kmph is likely to prevail on South Rajasthan on 27th August.
- Strong surface wind speed reaching 30-40 kmph gusting to 50 kmph is very likely over Gujarat state, along and off Gujarat & adjoining Pakistan and north Maharashtra coasts and northeast Arabian Sea on 26th August, becoming squally wind speed reaching 40-50 kmph gusting to 60 kmph over the same region on 27th & 28th August.
- Squally wind speed reaching 55-65 kmph gusting to 75 kmph is likely to prevail along & off Gujarat & adjoining Pakistan coasts and northeast and adjoining eastcentral Arabian Sea on 29th August. Squally wind speed reaching 40-50 kmph gusting to 60 kmph for interior district of Gujarat state on 29th August.
- Squally wind speed reaching 40-50 kmph gusting to 60 kmph is likely to prevail along and off north Maharashtra coasts on 28th & 29th August.

(iii) Sea condition:

- Squally weather with Rough to very Rough sea conditions is very likely to prevail along & off Gujarat & adjoining Pakistan and north Maharashtra Coasts and Northeast & adjoining Eastcentral Arabian Sea till 30th August.
- Squally weather with Rough Sea condition is very likely to prevail over North Bay of Bengal and along & off North Odisha, West Bengal, Bangladesh coasts on 25th and 26th August.

(iv) Fisherman warning:

- Fishermen are advised not venture into Northeast & adjoining Eastcentral Arabian Sea and along & off Gujarat & adjoining Pakistan and north Maharashtra Coasts till 30th August.
- Fishermen are advised not to venture into North Bay of Bengal and along & off North Odisha, West Bengal, Bangladesh coasts on 25th and 26th August.

(v) Advisory for offshore/onshore Exploration and Production (E & P) Operators:

The small ships and offshore -onshore E & P operators, shipping and port authorities along & off Gujarat & north Maharashtra Coasts and Northeast & adjoining Eastcentral Arabian Sea are advised to keep watch on developing weather and take necessary actions.

(vi) Impact Expected

- Localized Flooding of roads, water logging in low lying areas and closure of underpasses mainly in urban areas of the above region.
- Occasional reduction in visibility due to heavy rainfall.
- Reduction of visibility over sea area due to sea spray induced by strong wind and heavy rainfall.
- Disruption of traffic in major cities due to water logging in roads leading to increased travel time.
- Minor damage to kutchha roads.
- Possibilities of damage to vulnerable structure.
- Localized Landslides/Mudslides/landslips/mud slips/land sinks/mud sinks.
- Damage to horticulture and standing crops in some areas due to inundation.

- It may lead to riverine flooding in some river catchments (for riverine flooding please visit Web page of CWC)

(v) Action Suggested

- Fishermen are advised not venture into Northeast & adjoining Eastcentral Arabian Sea and along & off Gujarat & adjoining Pakistan and north Maharashtra Coasts till 30th August.
- Fishermen are advised not to venture into North Bay of Bengal and along & off North Odisha, West Bengal, Bangladesh coasts on 25th and 26th August.
- Judicious regulation of offshore/onshore Operations
- Judicious regulation of surface transports including railways and roadways.
- Check for traffic congestion on your route before leaving for your destination.
- Follow any traffic advisories that are issued in this regard.
- Avoid going to areas that face the water logging problems often.
- Avoid staying in vulnerable structure.

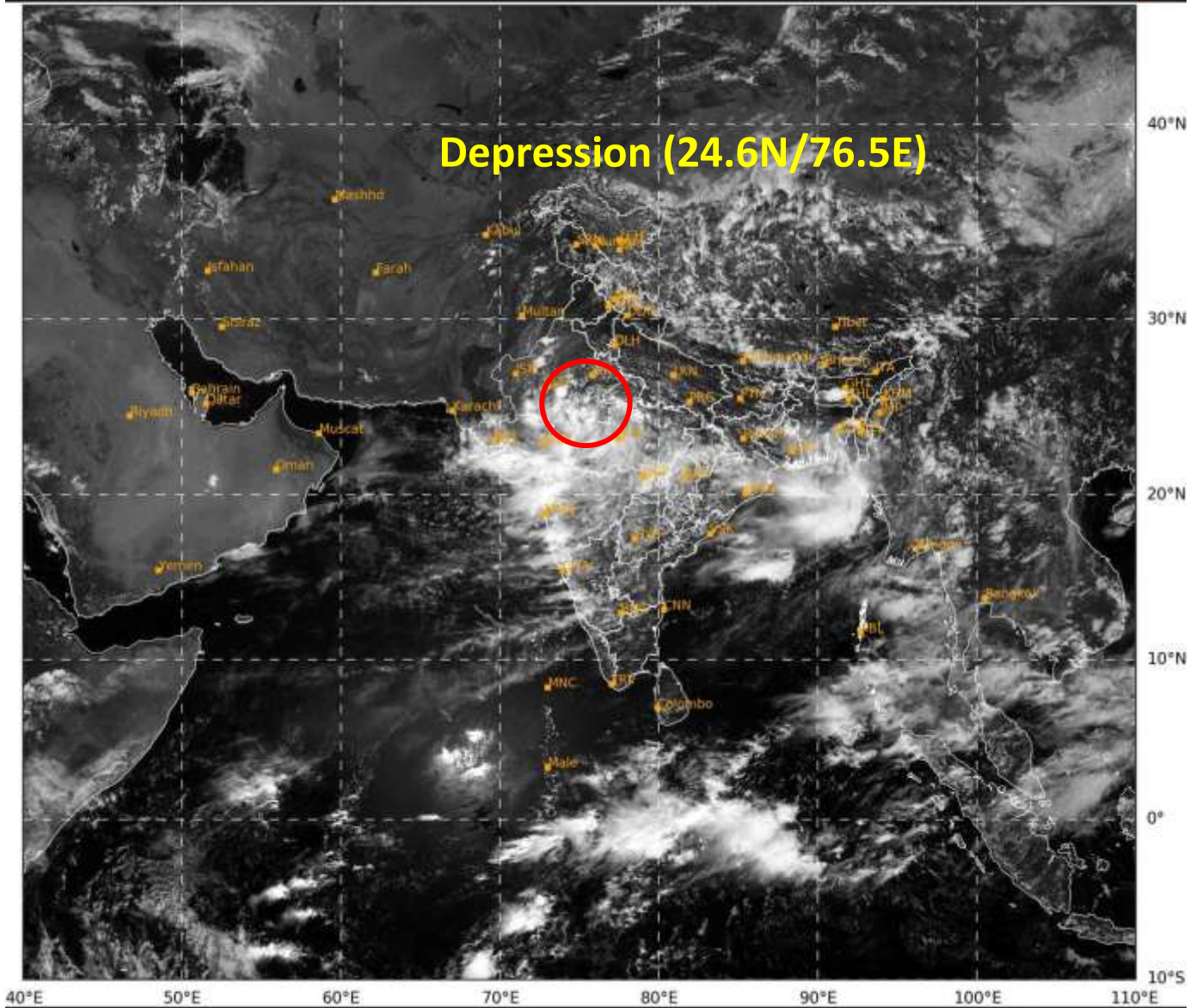
(vi) Agromet. advisories for Heavy Rainfall likely over various parts of the country

- Make provision for draining out excess water from crop fields to avoid water stagnation in Madhya Pradesh, South Rajasthan, Gujarat State and North Maharashtra.
- Provide mechanical support to horticultural crops and staking to vegetables.

Next bulletin will be issued at 1430 hours IST of today, the 25th August, 2024.

**(Dr. Ananda Kumar Das)
Scientist F, Cyclone Warning, New Delhi**

Copy to: ACWC Kolkata/ACWC Mumbai/RMC Mumbai/CWC Ahmedabad/MC, Jaipur/RMC, Nagpur/MC, Bhopal//CWC Bhubaneswar/MC, Goa



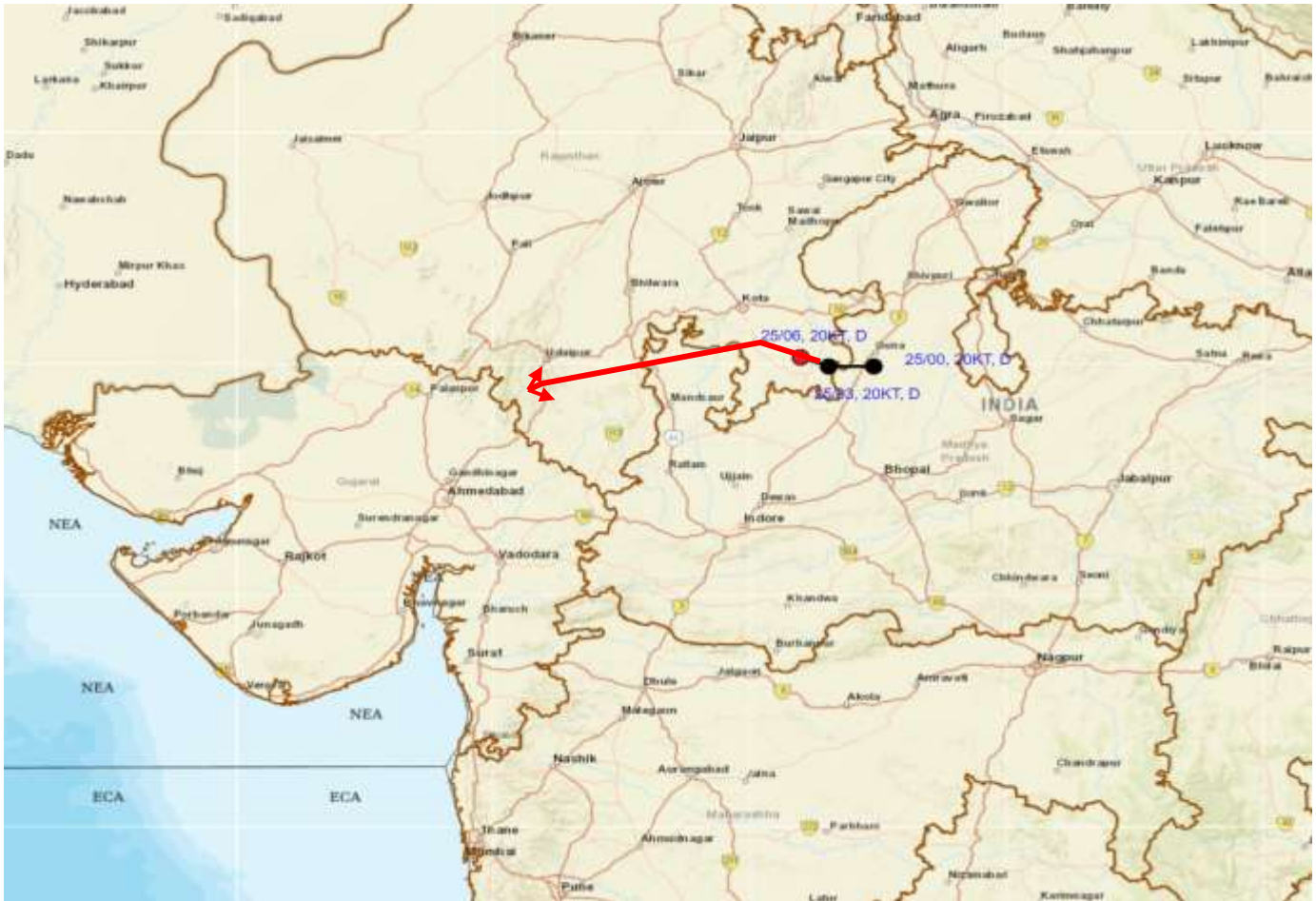
46

1023

IMD, DELHI



**OBSERVED AND FORECAST TRACK OF DEPRESSION OVER EAST RAJASTHAN
ADJOINING NORTHWEST MADHYA PRADESH BASED ON 0600 UTC (1130 IST) OF
25TH AUGUST, 2024.**



DATE/TIME IN UTC

IST=UTC + 0530

L: LOW PRESSURE AREA

WML: WELL MARKED LOW PRESSURE AREA

D: DEPRESSION (17-27 KT)

DD: DEEP DEPRESSION (28-33 KT)

CS: CYCLONIC STORM (34-47 KT)

SCS: SEVERE CYCLONIC STORM (48-63KT)

VSCS: VERY SEVERE CYCLONIC STORM (64-89 KT)

ESCS: EXTREMELY SEVERE CYCLONIC STORM (90-119 KT)

SuCS: SUPER CYCLONIC STORM (\geq 120 KT)



LESS THAN 34 KT



34-47 KT



\geq 48 KT



OBSERVED TRACK

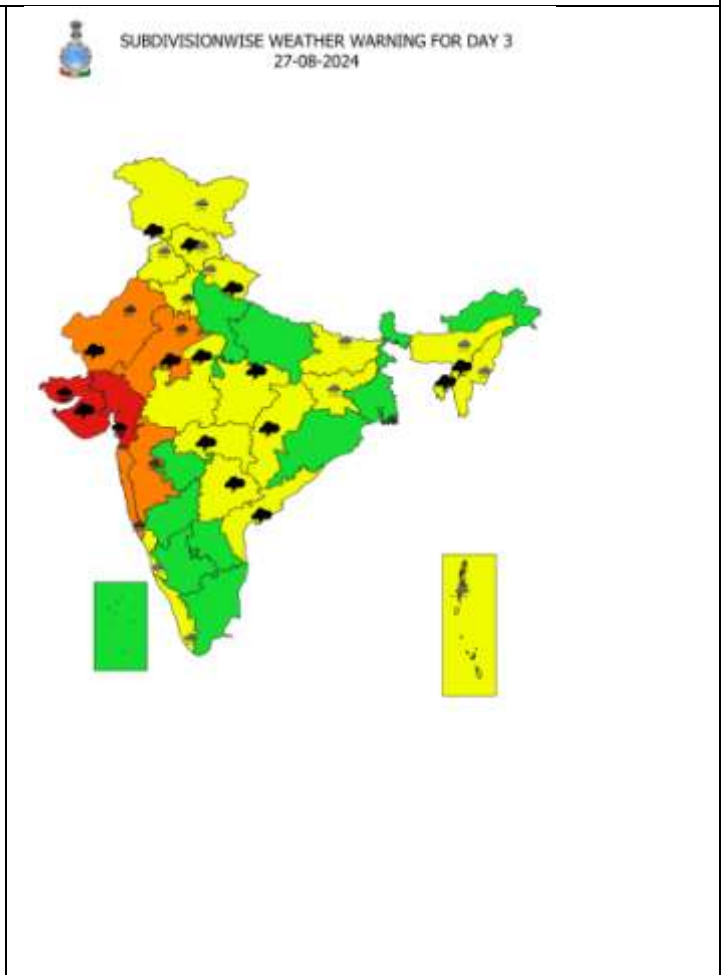
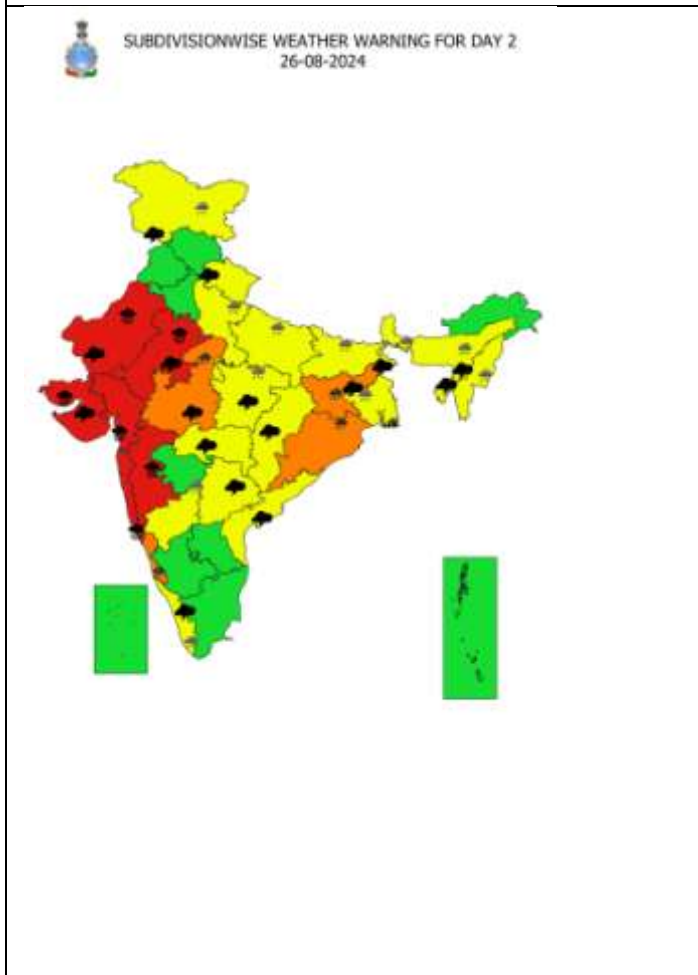
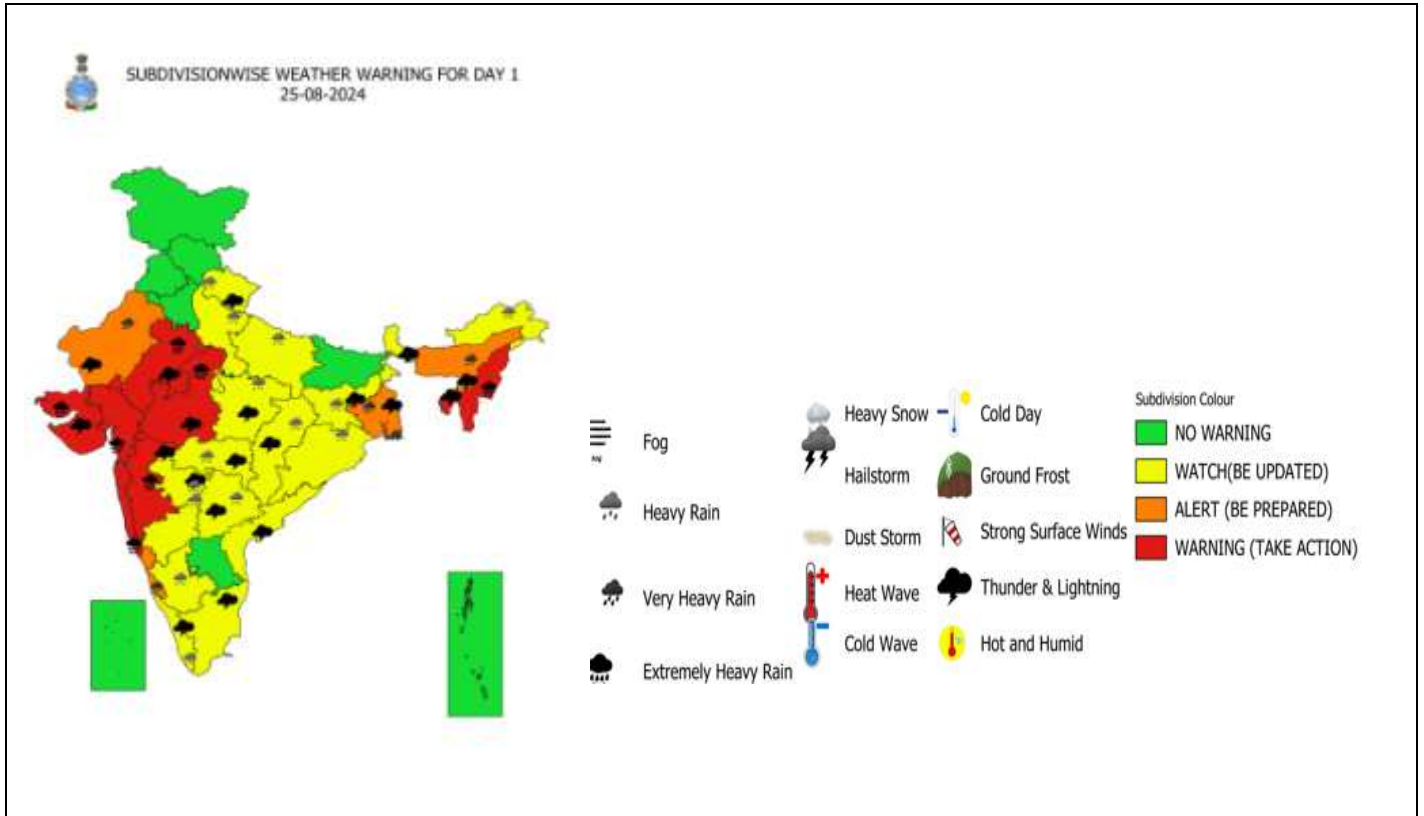


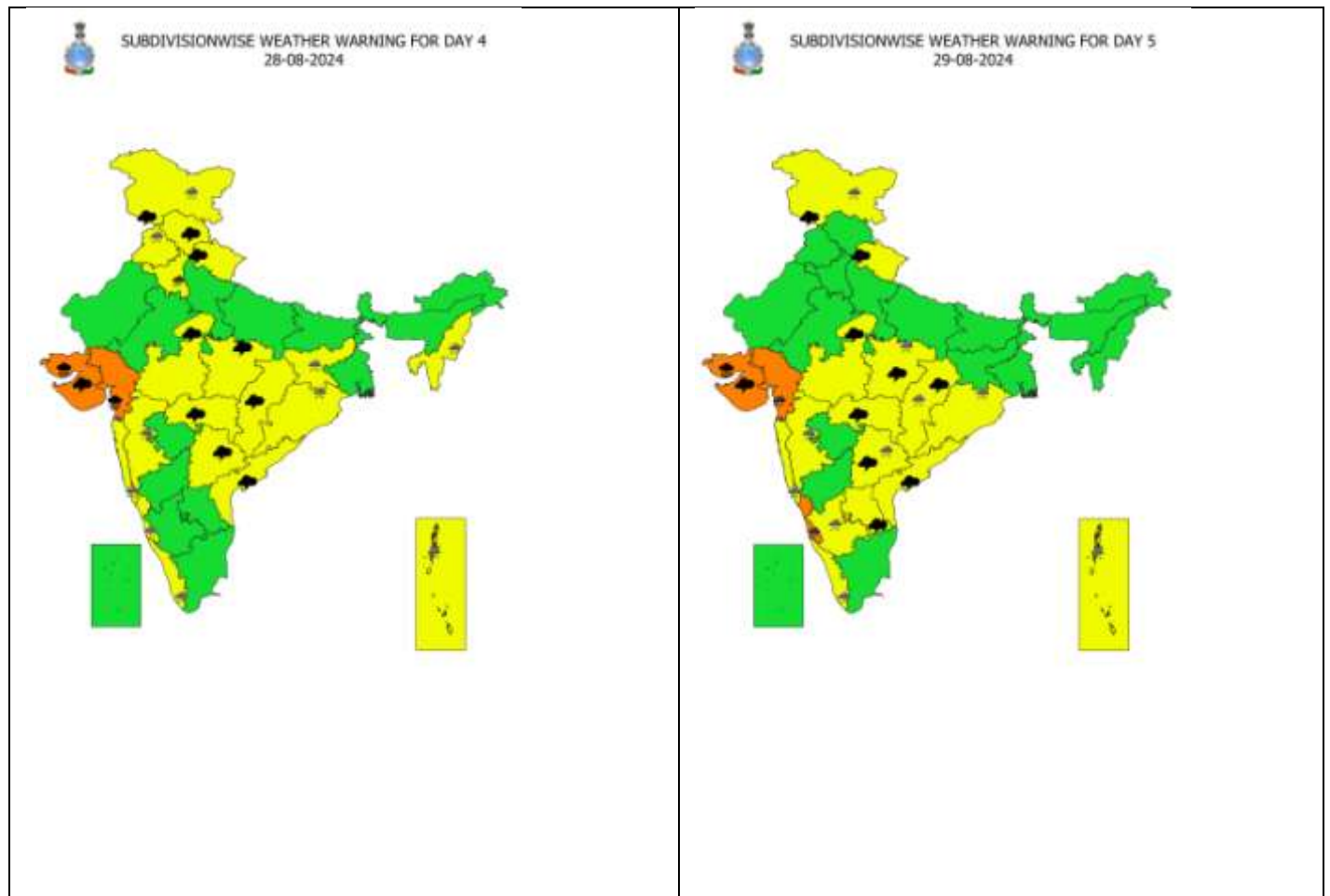
FORECAST TRACK



CONE OF UNCERTAINTY

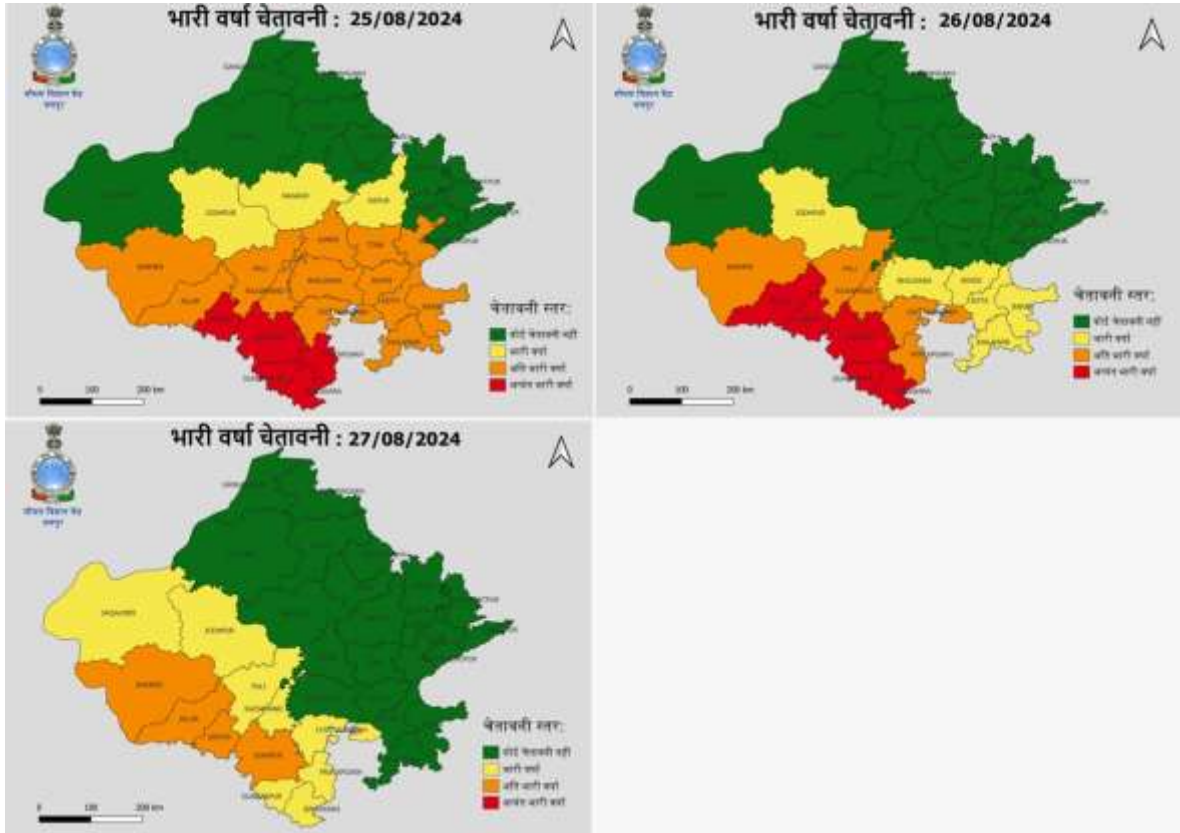
Weather Warning Graphics





- Action may be taken based on **ORANGE AND RED** COLOUR warnings.
- Vulnerable regions likely urban and hilly areas action may be initiated for heavy rainfall warning.
- As the lead period increases forecast accuracy decreases.

District-wise Warning Graphics



दिवस - 1 नुसार राज्य भर वीर, उन्हा, पावस नसत राहिली तरी 25-08-2024 माे 'आरं सज्जाद ती केवळची' | दिवस - 2 नुसार राज्य भर वीर, उन्हा पावस नसत राहिली तरी 26-08-2024 माे 'आरं सज्जाद ती केवळची' | दिवस - 3 नुसार राज्य भर वीर, उन्हा पावस नसत राहिली तरी 27-08-2024 माे 'आरं सज्जाद ती केवळची'

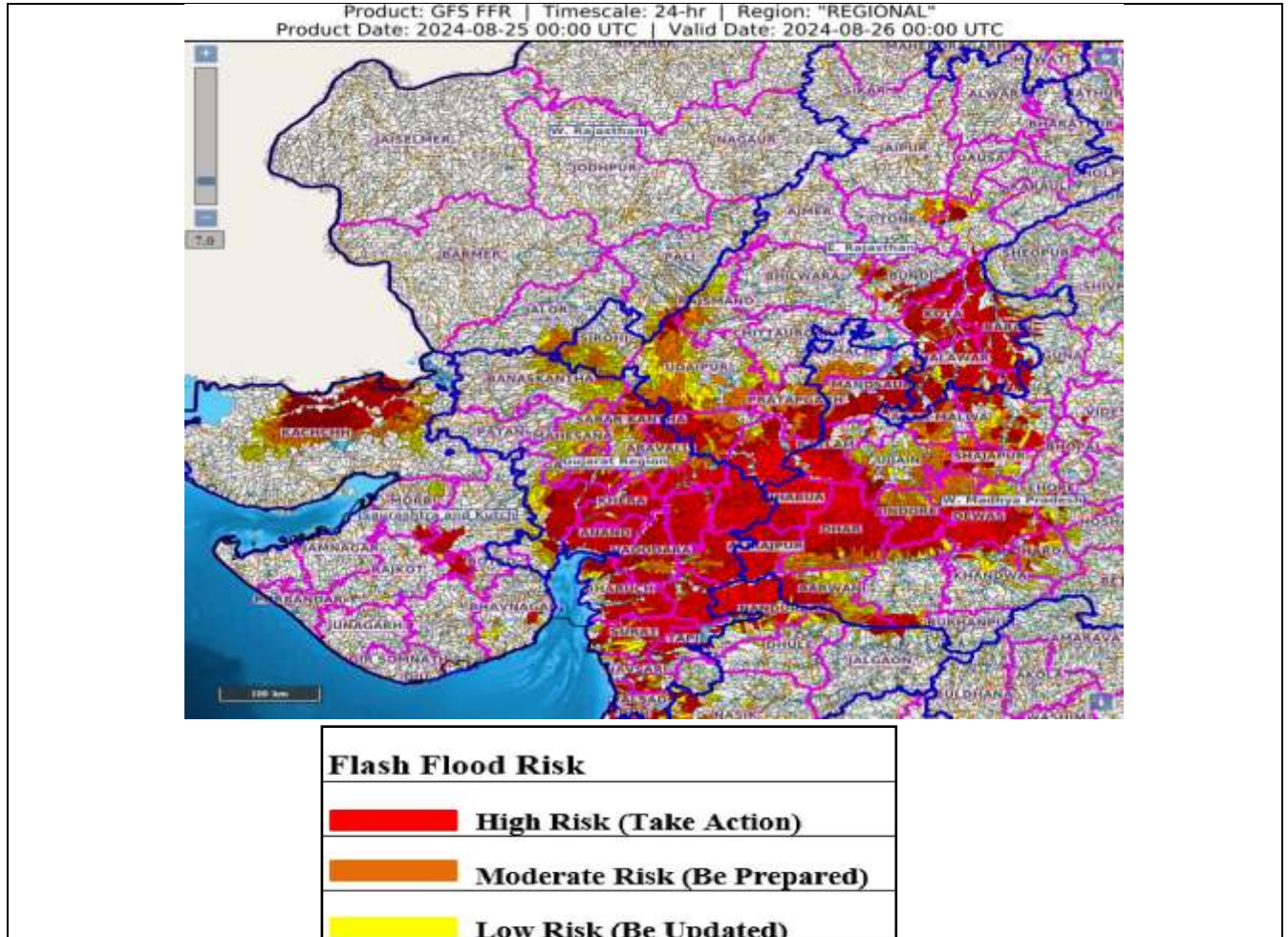


दिवस - 4 नुसार राज्य भर वीर, उन्हा पावस नसत राहिली तरी 28-08-2024 माे 'आरं सज्जाद ती केवळची' | दिवस - 5 नुसार राज्य भर वीर, उन्हा पावस नसत राहिली तरी 29-08-2024 माे 'आरं सज्जाद ती केवळची' | दिवस - 6 नुसार राज्य भर वीर, उन्हा पावस नसत राहिली तरी 30-08-2024 माे 'आरं सज्जाद ती केवळची'



दिवस - 7 नुसार राज्य भर वीर, उन्हा पावस नसत राहिली तरी 31-08-2024 माे 'आरं सज्जाद ती केवळची' | दिवस - 8 नुसार राज्य भर वीर, उन्हा पावस नसत राहिली तरी 01-09-2024 माे 'आरं सज्जाद ती केवळची'

Flash Flood Guidance



24 hours Outlook for the Flash Flood Risk (FFR) till 0530 IST of 26-08-2024 :

Low to Moderate flash flood risk likely over few watersheds & neighbourhoods of following Met Sub-divisions during next 24 hours:

East Rajasthan - Banswara, Baran, Bundi, Dungarpur, Jhalawar, Kota, Pratapgarh, Rajsmand, Sirohi, Swaimadhapur, Tonk and Udaipur districts.

West Madhya Pradesh - Agar-Malwa, Alirajpur, Ashoknagar, Barwani, Dewas, Dhar, Harda, Indore, Jhabua, Khandwa, Khargone, Mandsaur, Nimach, Rajgarh, Ratlam, Sehore, Shajapur and Ujjain districts.

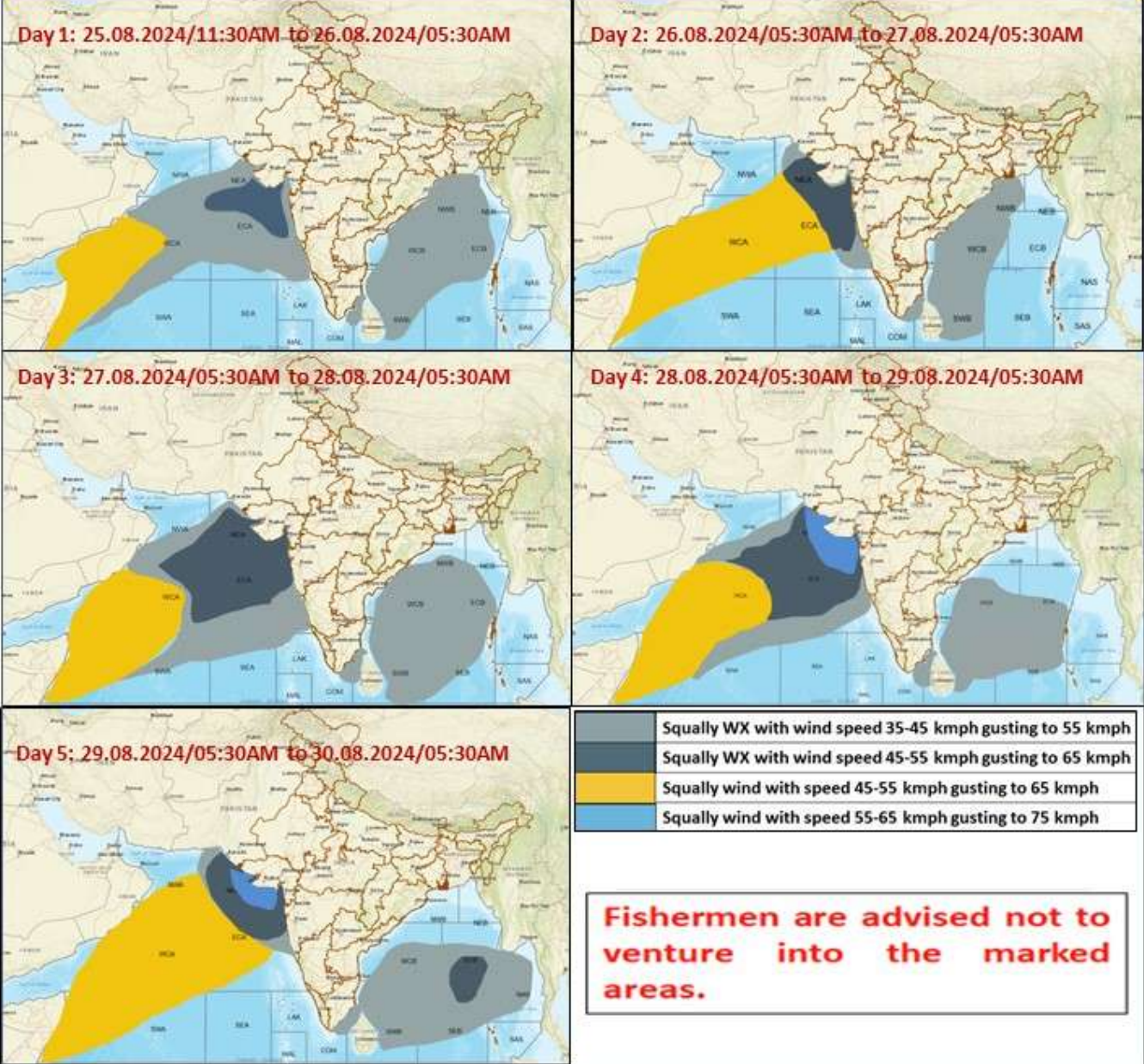
Gujarat Region - Dadar & Nagar Haveli, Daman, Ahmadabad, Anand, Aravalli, Banaskantha, Bharuch, Chhota Udepur, Dahod, Dangs, Gandhinagar, Khera, Mahesana, Mahisagar, Narmada, Navsari, Panchmahal, Sabar Kantha, Surat, Tapi, Vadodara and Valsad districts.

Madhya Maharashtra - Jalgaon, Nandurbar and Nasik districts.

Saurashtra & Kutch - Bhavnagar, Rajkot, Surendranagar, Morbi and Kachchh districts.

Surface runoff/ Inundation may occur at some fully saturated soils & low-lying areas over Area of Concern (AoC) as shown in map due to expected rainfall occurrence in next 24 hours.

Fishermen Warning Graphics



24 hours cumulative realised rainfall (in cm) ending at 0830 hours IST of 25th August

Gujarat Region: Vapi (dist Valsad) 36, Pardi (dist Valsad) 35, Kaprada (dist Valsad) 34, Valsad_ Kvk Aws (dist Valsad) 34, Umerpada (dist Surat) 31, Khergam (dist Navsari) 29, Daman (dist Daman) 29, Daman_aws (dist Daman) 29, Silvassa (dist Dadara & Nagar Haveli) 27, Ukai (dist Surat) 27, Dharampur (dist Valsad) 27, Daman Fmo (dist Daman) 26, Madhbun (dist Dadara & Nagar Haveli) 24, Sagbara (dist Narmada) 20, Khanvel (dist Dadara & Nagar Haveli) 20, Vyara (dist Tapi) 19, Vansda (dist Navsari) 18, Songadh (dist Tapi) 17, Waghai (dist Dangs) 15, Dang_kvks Aws (dist Dangs) 15, Dangs (ahwa) (dist Dangs) 15, Mangrol (dist Surat) 15, Subir (dist Dangs) 15, Umergam (dist Valsad) 14, Valsad (dist Valsad) 14, Narmada_kvks Aws (dist Narmada) 13, Khanpur (dist Mahisagar) 12, Chhota Udepur (dist Chhota Udepur) 12, Kadi (dist Mehsana) 12, Garbada (dist Dahod) 12, Uchchhal (dist Tapi) 11, Palsana (dist Surat) 11, Kamrej (dist Surat) 10, Valod (dist Tapi) 10, Quant (dist Chhota Udepur) 10, Dahod (dist Dahod) 10, Dahod_aws (dist Dahod) 10, Dahod_kvks Aws (dist Dahod) 10, Chikhli (dist Navsari) 9, Mandvi (dist Surat) 9, Dolvan (dist Tapi) 9, Patan (dist Patan) 9, Tarapur (dist Anand) 9, Morva Hadaf (dist Panchmahal) 9, Dediapada (dist Narmada) 8, Limkheda (dist Dahod) 8, Mansa (dist Gandhinagar) 8, Kukarmunda (dist Tapi) 8, Gandevi (dist Navsari) 8, Surat_kvks Aws (dist Surat) 8, Deesa (dist Banaskantha) 8, Mahesana (dist Mehsana) 7, Netrang (dist Bharuch) 7, Dholka (dist Ahmedabad) 7, Jambughoda (dist Panchmahal) 7, Virpur (dist Mahisagar) 7, Vyara_aws (dist Tapi) 7, Surat City (dist Surat) 7, Vijapur (dist Mehsana) 7, Kalol (dist Panchmahal) 7, Ghoghamba (dist Panchmahal) 7, Mahuva (dist Surat) 7, Poshina (dist Sabarkantha) 7, Bardoli (dist Surat) 7, Garudeshwar (dist Narmada) 7, Kalol(g) (dist Gandhinagar) 7, Anand (dist Anand) 7;

West Madhya Pradesh: Kathiwada (dist Alirajpur) 21, Biaora (dist Rajgarh) 14, Alirajpur (dist Alirajpur) 14, Begumganj (dist Raisen) 13, Navibagh Aet (dist Bhopal) 13, Bairagarh Airport (dist Bhopal) 11, Maheshwar (dist Khargone) 11, Badarwas (dist Shivpuri) 9, Raisen-aws (dist Raisen) 9, Bhimpur (dist Betul) 9, Budhni (dist Sehore) 9, Khategaon (dist Dewas) 9, Seoni Malwa (dist Narmadapuram) 8, Chicholi (dist Betul) 8, Bhopal Arera Hills (dist Bhopal) 8, Kurwai (dist Vidisha) 8, Rehti (dist Sehore) 8, Shahpur (dist Betul) 7, Rahatgaon (dist Harda) 7, Godadongri (dist Betul) 7, Tal (dist Ratlam) 7, Satwas (dist Dewas) 7, Sitamau (dist Mandsaur) 7, Hatpiplaya (dist Dewas) 7, Sarangpur (dist Rajgarh) 7, Bagli (dist Dewas) 7, Shajapur (dist Shajapur) 7, Sonkatch (dist Dewas) 7, Alot (dist Ratlam) 7;

Madhya Maharashtra: Velhe (dist Pune) 18, Lonavala_agri (dist Pune) 16, Peth (dist Nashik) 16, Harsul - Fmo (dist Nashik) 16, Navapur (dist Nandurbar) 14, Igatpuri (dist Nashik) 14, Surgana (dist Nashik) 13, Dhadgaon/akrani- Hydro (dist Nandurbar) 12, Akole (dist Ahmednagar) 11, Mahabaleshwar- Imd Obsy (dist Satara) 11, Ozharkheda - Fmo (dist Nashik) 11, Paud Mulshi (dist Pune) 11, Nandurbar (dist Nandurbar) 8, Gidhade - Fmo (dist Dhule) 8, Dhule (dist Dhule) 8, Bodwad (dist Jalgaon) 8, Akkalkuwa (dist Nandurbar) 8, Jamner (dist Jalgaon) 7, Taloda (dist Nandurbar) 7, Mulher - Fmo (dist Nashik) 7, Vani-arg (dist Nashik) 7, Chalisgaon (dist Jalgaon) 7, Trimbakshwar (dist Nashik) 7, Chandgad (dist Kolhapur) 7;

Konkan & Goa: Pernem (dist North Goa) 16, Matheran (dist Raigad) 15, Vikramgad (dist Palghar) 14, Valpoi (dist North Goa) 14, Dahanu - Imd Obsy (dist Palghar) 14, Quepem (dist South Goa) 14, Sangameshwar Devrukh (dist Ratnagiri) 14, Dabolim N.a.s.- Navy (dist South Goa) 13, Khalapur (dist Raigad) 13, Mapusa (dist North Goa) 13, Talasari (dist Palghar) 13, Tala (dist Raigad) 13, Sanguem (dist South Goa) 13, Kudal (dist Sindhudurg) 12, Mokheda - Fmo (dist Palghar) 12, Lanja (dist Ratnagiri) 12, Mormugao - Pmo Imd (dist South Goa) 12, Devgad (dist Sindhudurg) 12, Pen (dist Raigad) 11, Dodamarg (dist Sindhudurg) 11, Jawhar (dist Palghar) 11, Panjim - Imd Obsy (dist North Goa) 11, Ratnagiri - Imd Obsy (dist Ratnagiri) 11, Karjat_agri (dist Raigad) 11, Khed (dist Ratnagiri) 11, Margao (dist South Goa) 11, Mulde_Agri (dist Sindhudurg) 10, Thane (dist Thane) 10, Murud (dist Raigad) 10, Canacona (dist South Goa) 10, Panvel_agri (dist Raigad) 9, Tbia Imd Part Time (dist Thane) 9, Sawantwadi (dist Sindhudurg) 9, Malvan (dist Sindhudurg) 9, Palghar_agri (dist Palghar) 9, Roha (dist Raigad) 9, Rajapur (dist Ratnagiri) 9, Mahad (dist Raigad) 9, Dapoli_agri (dist Ratnagiri) 8, Santacruz - Imd Obsy (dist Mumbai Suburban) 8, Ulhasnagar (dist Thane) 8, Vaibhavwadi (dist Sindhudurg) 8, Rameshwar_agri (dist Sindhudurg) 8, Ponda (dist North Goa) 8, Murbad (dist Thane) 8, Guhagarh (dist Ratnagiri) 8, Awalegaon-Arg (dist Sindhudurg) 8, Vengurla Arg (dist Sindhudurg) 7, Mangaon (dist

Raigad) 7, Bhiwandi (dist Thane) 7, Uran (dist Raigad) 7, Shahapur (dist Thane) 7, Wakwali_agri (dist Ratnagiri) 7, Pawarwadi - Arg (dist Ratnagiri) 7, Poladpur (dist Raigad) 7;

East Madhya Pradesh: Badamalhera (dist Chhatarpur) 14, Tendukheda (dist Damoh) 14, Panagar (dist Jabalpur) 12, Khurai (dist Sagar) 11, Tikamgarh-aws (dist Tikamgarh) 11, Badwara (dist Katni) 10, Bina (dist Sagar) 9, Buxwaha (dist Chhatarpur) 9, Orchha (dist Niwari) 9, Badagaon Dhasan (dist Tikamgarh) 7, Karkeli (dist Umariya) 7, Baldevgarh (dist Tikamgarh) 7, Chandia (dist Umariya) 7, Jabera (dist Damoh) 7;

East Rajasthan: Dausa (dist Dausa) 14, Reodar Sr (dist Sirohi) 13, Chothkabarwara Sr (dist Sawai Madhopur) 12, Sangod (dist Kota) 9, Baran (dist Baran) 9, Kishanganj (dist Baran) 9, Pindwara (dist Sirohi) 8, Banera Sr (dist Bhilwara) 8, Ajmer Tehsil Sr (dist Ajmer) 8, Pratapgarh (dist Pratapgarh) 8, Ajmer (dist Ajmer) 8, Kherwara (dist Udaipur) 8, Khandar Sr (dist Sawai Madhopur) 8, Nasirabad (dist Ajmer) 7, Kotri (dist Bhilwara) 7, Sarmathura Sr (dist Dholpur) 7, Malerainadunger Sr (dist Sawai Madhopur) 7, Jawaja (dist Ajmer) 7, Malpura (dist Tonk) 7, Garhi (dist Banswara) 7, Mangliawas Sr (dist Ajmer) 7;

Coastal Karnataka: Castle Rock (dist Uttara Kannada) 13, Ankola (dist Uttara Kannada) 11, Kadra (dist Uttara Kannada) 9, Gersoppa (dist Uttara Kannada) 9,

South Interior Karnataka: Kottigehara (dist Chikkamagaluru) 11;

Chhattisgarh: Gangalur (dist Bijapur) 11, Lalpur Thana (dist Mungeli) 7;

Saurashtra & Kutch: Talala (dist Gir Somnath) 10, Mendarda (dist Junagadh) 9, Visavadar (dist Junagadh) 8, Keshod (dist Junagadh) 7, Babra (dist Amreli) 7;

Odisha: Khaira (Balasore) 10, Banki (Cuttack) 9, Ghasipura (Keonjhar) 9, Chendipada (Angul) 9, Kaptipada (Mayurbhanj) 8, Swam-patna (Keonjhar) 8, Anandpur (Keonjhar) 8, Laikera (Jharsuguda) 8, Jhumpura (Keonjhar) 8, Kirmira (Jharsuguda) 8, Bijatala (Mayurbhanj) 7, Udala (Mayurbhanj) 7, Oupada (Balasore) 7, Jaipur (Balasore) 7;

Coastal Andhra Pradesh & Yanam: Palakonda(arg) (dist Parvathipuram Manyam) 9;

Uttarakhand: Dharchula (Pithoragarh) 9, Loharkhet (Bageshwar) 7;

Jharkhand: Chakulia (dist East Singhbhum) 9, Bau Kanke (dist Ranchi) 7;

Marathwada: Khultabad (dist Chh. Sambhajinagar) 9;

Vidarbha: Nagbhir (dist Chandrapur) 8, Chikhalda (dist Amraoti) 7;

Meghalaya: Ratacherra (dist East Jaintia Hills) 8;

Telangana: Mirdoddi (dist Siddipet) 7;

West Rajasthan: Raniwada Sr (dist Jalore) 7;